

Engineering Consultants
Infrastructure • Land Development • Surveying

220 W. Congress, Suite 400
Detroit, MI 48226
Phone: (313) 967-4700
Fax: (313) 967-4707
905 South Blvd East
Rochester Hills, MI 48307
Phone: (248) 944-5404
Fax: (248) 944-5404
2505 W. Jefferson
Trenton, MI 48183
Phone: (734) 671-4344
Fax: (734) 671-4347
www.spaldingdecker.com



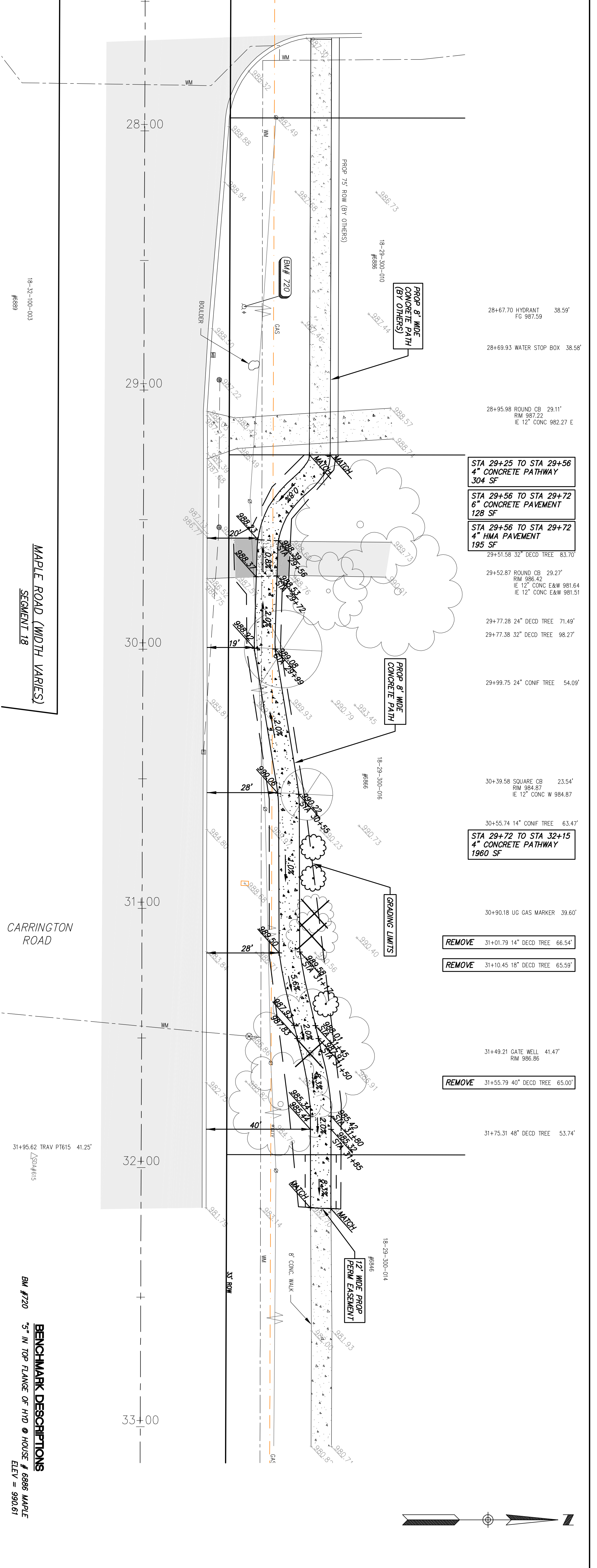
NOTE: UTILITY INFORMATION ON THIS DRAWING MAY BE VARIOUS UTILITY COMPANIES, CITY/COUNTY AGENCIES AND OTHER VARIOUS SOURCES. UNDERGROUND UTILITIES IDENTIFIED UPON A UTILITY COMPANY'S FINISHED PLANS, THEIR LOCATION, IF SHOWN UPON THIS SHEET, ARE ASSUMED TO BE CORRECT. THIS INFORMATION IS NOT GUARANTEED BY THE ENGINEER. NO GUARANTEE IS GIVEN AS TO THE COMPLETENESS OR ACCURACY THEREOF.

PRIOR TO CONSTRUCTION, ALL LOCATIONS AND DEPTHS (IMPROVEMENTS) SHALL BE VERIFIED IN THE FIELD. CALL MISS DIG 3 WORKING DAYS PRIOR TO CONSTRUCTION.
COPYRIGHT © 2008 SPALDING DEDECKER ASSOCIATES, INC. THIS DRAWING AND THE SUBJECT MATTER CONTAINED HEREIN ARE THE PROPERTY OF SPALDING DEDECKER ASSOCIATES, INC. REPRODUCED WITHOUT WRITTEN PERMISSION OF SPALDING DEDECKER ASSOCIATES, INC.
CHARTER TOWNSHIP OF WEST BLOOMFIELD
2009 PATHWAY IMPROVEMENTS
MAPLE ROAD PLAN
SEGMENT 18
STA 29+25 TO STA 32+16

NO.	DATE	REVISION
1	9/12/08	PRELIMINARY ALIQUANT
2	10/27/08	60% DESIGN REVIEW

DATE	DATE
6/20/08	09/11/08
09/11/08	DATE
DATE	DATE
BO PLAN DATE	DATE

DATE	DATE
6/20/08	09/11/08
09/11/08	DATE
DATE	DATE
BO PLAN DATE	DATE



- 28+67.70 HYDRANT FG 987.59 38.59'
- 28+69.93 WATER STOP BOX 38.58'
- 28+95.98 ROUND CB 29.11' RM 987.22 IE 12" CONC E&W 981.64 IE 12" CONC E&W 981.51
- 29+51.58 32" DECD TREE 83.70
- 29+52.87 ROUND CB 29.27' RM 986.42 IE 12" CONC E&W 981.64 IE 12" CONC E&W 981.51
- 29+77.28 24" DECD TREE 71.49'
- 29+77.38 32" DECD TREE 98.27'
- 29+99.75 24" CONF TREE 54.09'
- 30+39.58 SQUARE CB 23.54' RM 984.87 IE 12" CONC W 984.87
- 30+55.74 14" CONF TREE 63.47'
- 30+90.18 UG GAS MARKER 39.60'
- 31+01.79 14" DECD TREE 66.54'
- 31+10.45 18" DECD TREE 65.59'
- 31+49.21 GATE WELL 41.47' RM 986.86
- 31+55.79 40" DECD TREE 65.00'
- 31+75.31 48" DECD TREE 53.74'

BENCHMARK DESCRIPTIONS
BM #720 5" IN TOP FLANGE OF 110 Ø HOUSE # 6986 MAPLE ELEV = 980.61

GENERAL NOTES FOR SHEETS 2-23

- FOR SOIL EROSION NOTES SEE SHEET 27.
- ALL QUANTITIES ARE SUMMARIZED ON SHEET 23.
- MAINTAIN 3' MIN DISTANCE FROM EXIST UTILITIES (TYP) UNLESS OTHERWISE NOTED.
- CONTRACTOR WILL BE RESPONSIBLE FOR THE REMOVAL OF SPRINKLER HEADS AND PIPING WITHIN THE LIMITS OF THE PROPOSED PATHWAY PRIOR TO CONSTRUCTION AND RESETTING HEADS APPROXIMATE TO THE REMOVAL LOCATION BUT OUTSIDE THE LIMITS OF THE NEW SAFETY PATH. ANY HEADS OR PIPING DAMAGED DURING REMOVAL SHALL BE REPLACED NEW.
- THE LOCATION OF EXISTING UNDERGROUND UTILITIES AS SHOWN ON THESE DRAWINGS HAS BEEN VERIFIED AND NO GUARANTEE IS EITHER EXPRESSED OR IMPLIED AS TO THE COMPLETENESS OR ACCURACY THEREOF. THE CONTRACTOR SHALL BE EXCLUSIVELY RESPONSIBLE FOR DETERMINING THE EXACT LOCATION OF EXISTING UTILITIES AND PROPOSED UTILITY CROSSINGS IN THE FIELD PRIOR TO CONSTRUCTION. THE CONTRACTOR SHALL NOTIFY THE ENGINEER IF ANY CONFLICTS ARE APPARENT OR IF THE LOCATION DIFFERS SIGNIFICANTLY FROM THE PLANS.
- CLEARING AND GRUBBING SHALL BE IN ACCORDANCE WITH SECTION 02.03.02 OF THE SPECIFICATIONS FOR THIS PROJECT, INCLUDING TREE TRIMMING NECESSARY TO ACHIEVE SAFETY PATH CLEARANCES SPECIFIED IN THE CONSTRUCTION DETAILS. THE REMOVAL OF ITEMS INCLUDING, BUT NOT LIMITED TO FENCING, PLANTER BOXES, SHRUBS, TREES, SIGNS, ROCK GARDENS, BOULDERS, AND LANDSCAPE WALLS AS DEFINED IN THE SPECIFICATION DETERMINED TO BE WITHIN THE GRADING LIMITS OF THE SAFETY PATH.
- REPLACEMENT OF TREES AS SHOWN ON THE PLANS TO BE REMOVED OR AS OTHERWISE DIRECTED BY THE OWNER SHALL MEET THE FOLLOWING:
 - DECIDUOUS TREE REMOVAL THAT ARE EQUAL TO OR GREATER THAN 12" DIAMETER SHALL BE REPLACED WITH A 1.5" TO 2" DIAMETER DECIDUOUS TREE.
 - DECIDUOUS TREE REMOVALS THAT ARE BETWEEN 8" AND 12" IN DIAMETER SHALL BE REPLACED WITH A 1" DECIDUOUS DIAMETER TREE.
 - CONIFEROUS TREE REMOVALS THAT ARE EQUAL TO OR GREATER THAN 12" IN DIAMETER SHALL BE REPLACED WITH A MINIMUM 8" HEIGHT CONIFEROUS TREE.
 - CONIFEROUS TREE REMOVALS THAT ARE EQUAL TO OR GREATER THAN 4" IN DIAMETER SHALL BE REPLACED WITH A MINIMUM 4' HEIGHT CONIFEROUS TREE.
 - DECIDUOUS TREES SHALL BE REPLACED WITH THE FOLLOWING:
 - BUR OAK
 - SUGAR MAPLE
 - SHAGBARK HICKORY
 - CONIFEROUS TREES SHALL BE REPLACED WITH THE FOLLOWING:
 - WHITE PINE
 - WHITE SPRUCE
- PLACEMENT OF TREES AND SPECIES TO BE DETERMINED BY OWNER PRIOR TO PLANTING.