



# Northwestern Connector -Where We Are Now

Update to W. Bloomfield Township Board

September 22, 2008

Thomas G. Blust, P.E.

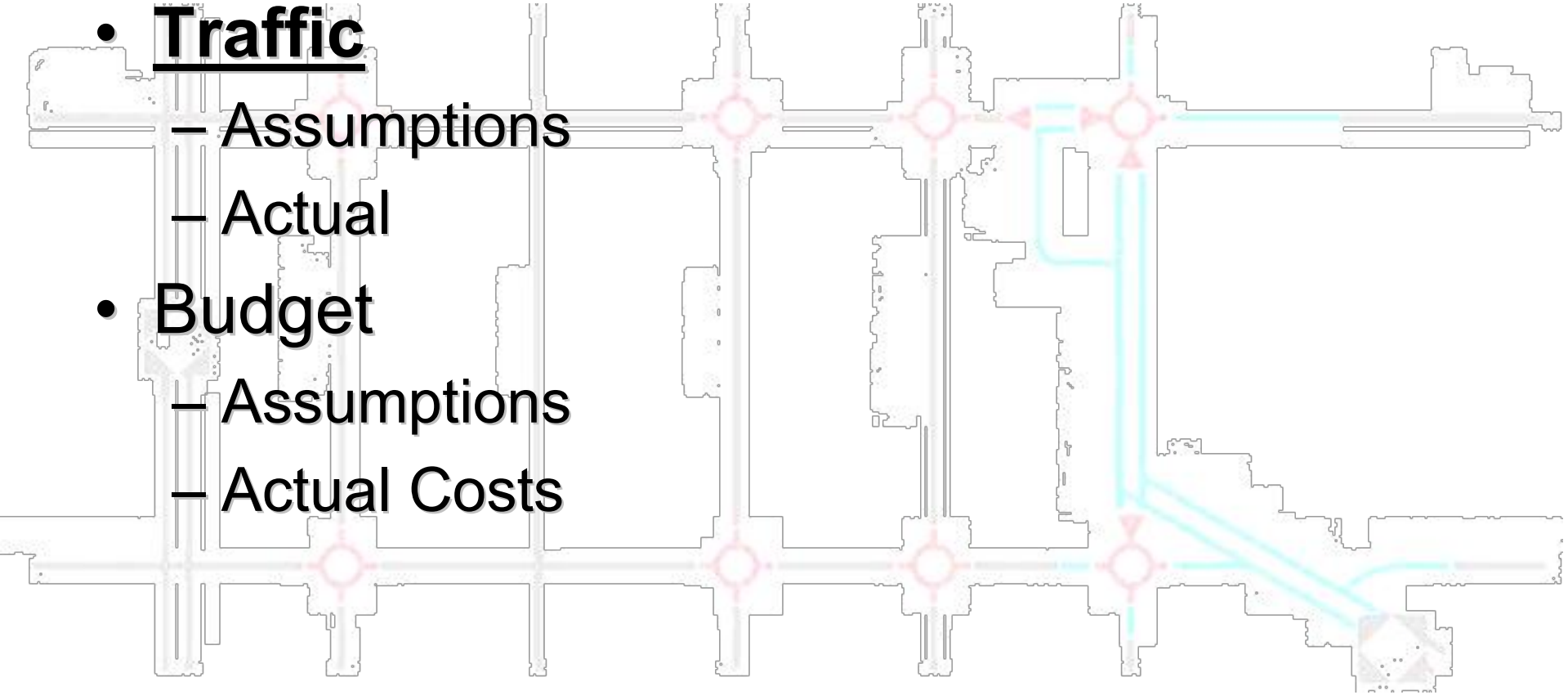
Director of Engineering

RCOC

# NWC - Where We Are Now

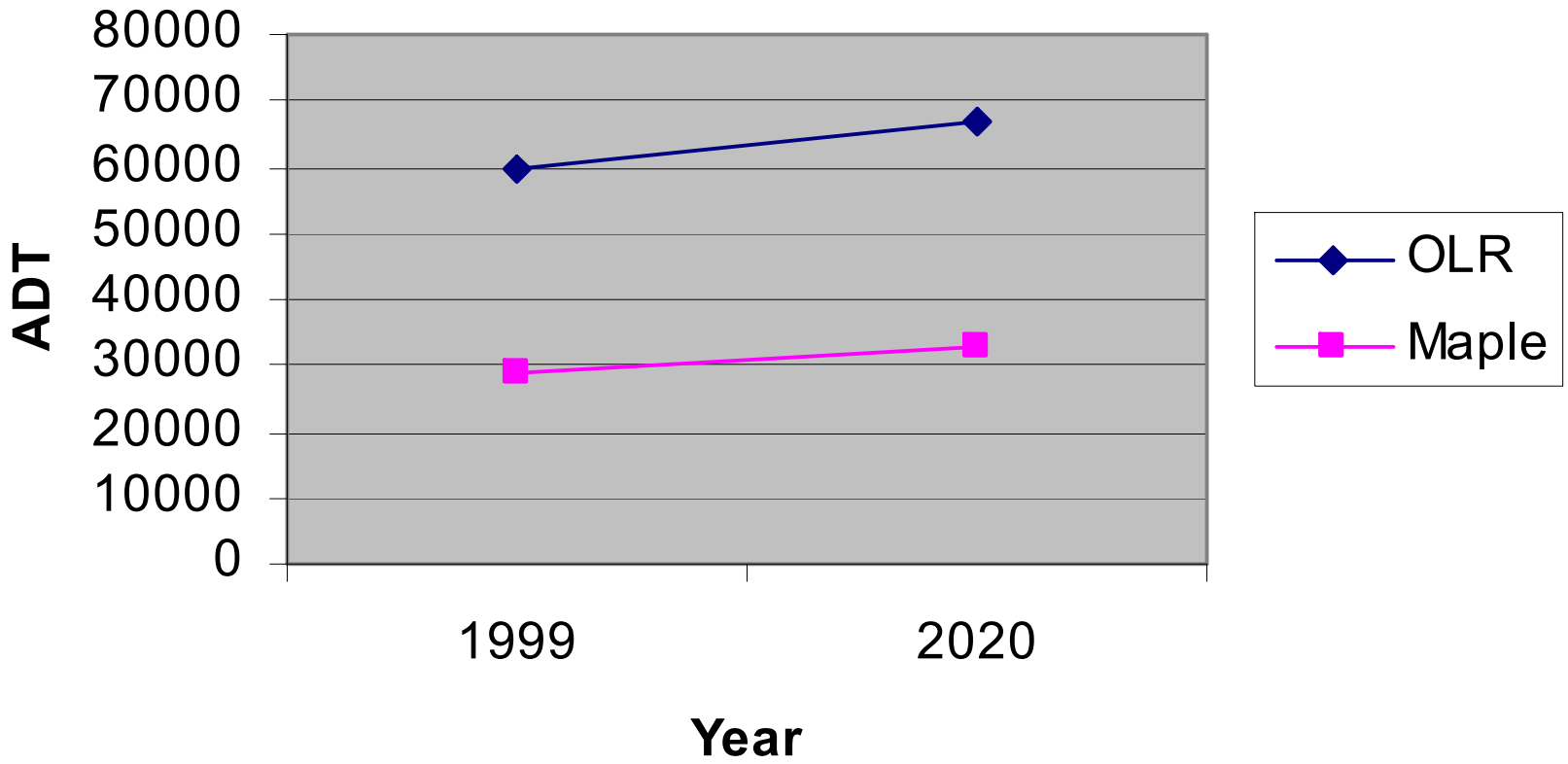


- **Traffic**
  - Assumptions
  - Actual
- **Budget**
  - Assumptions
  - Actual Costs



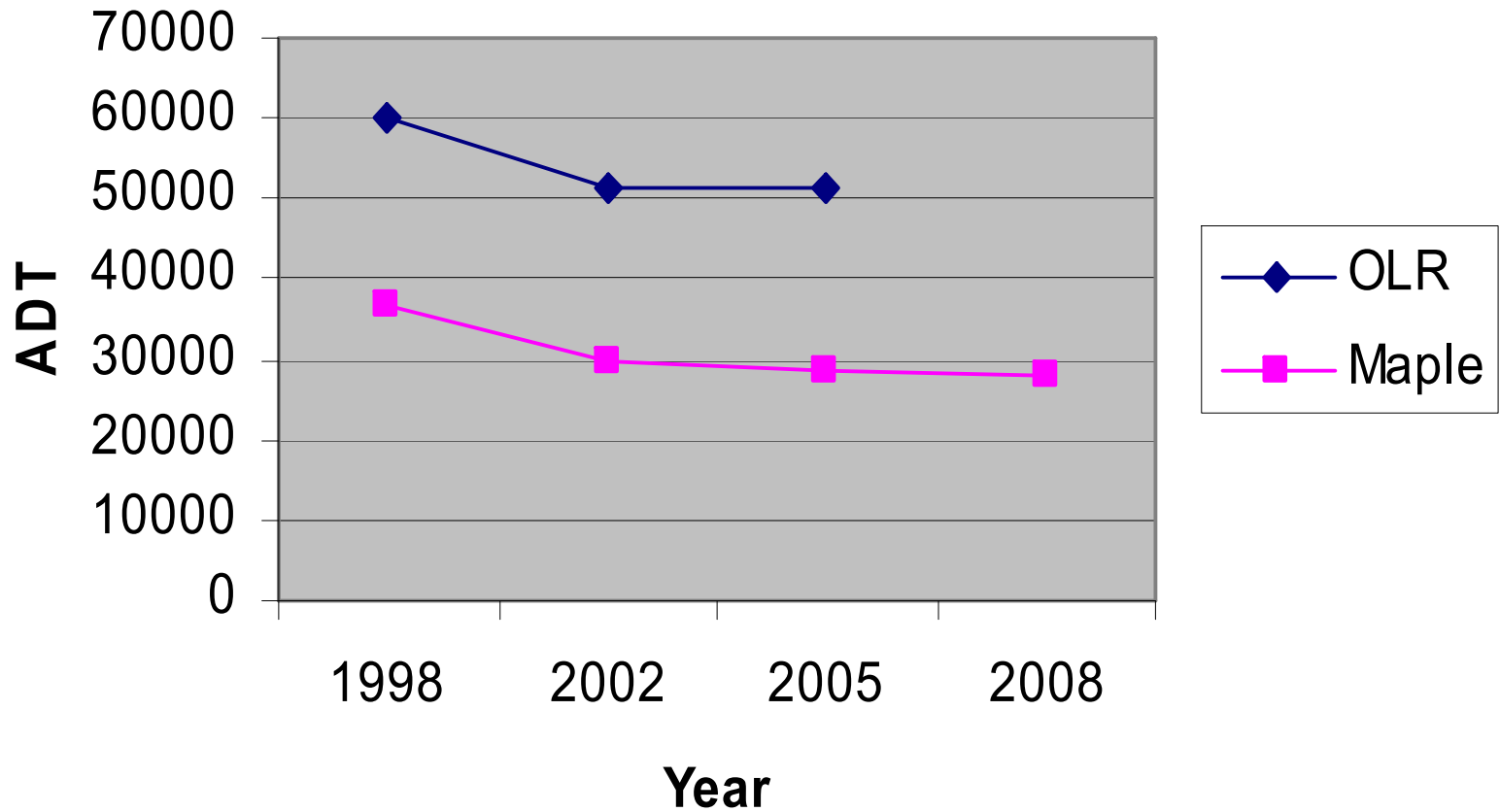


# Projected ADT

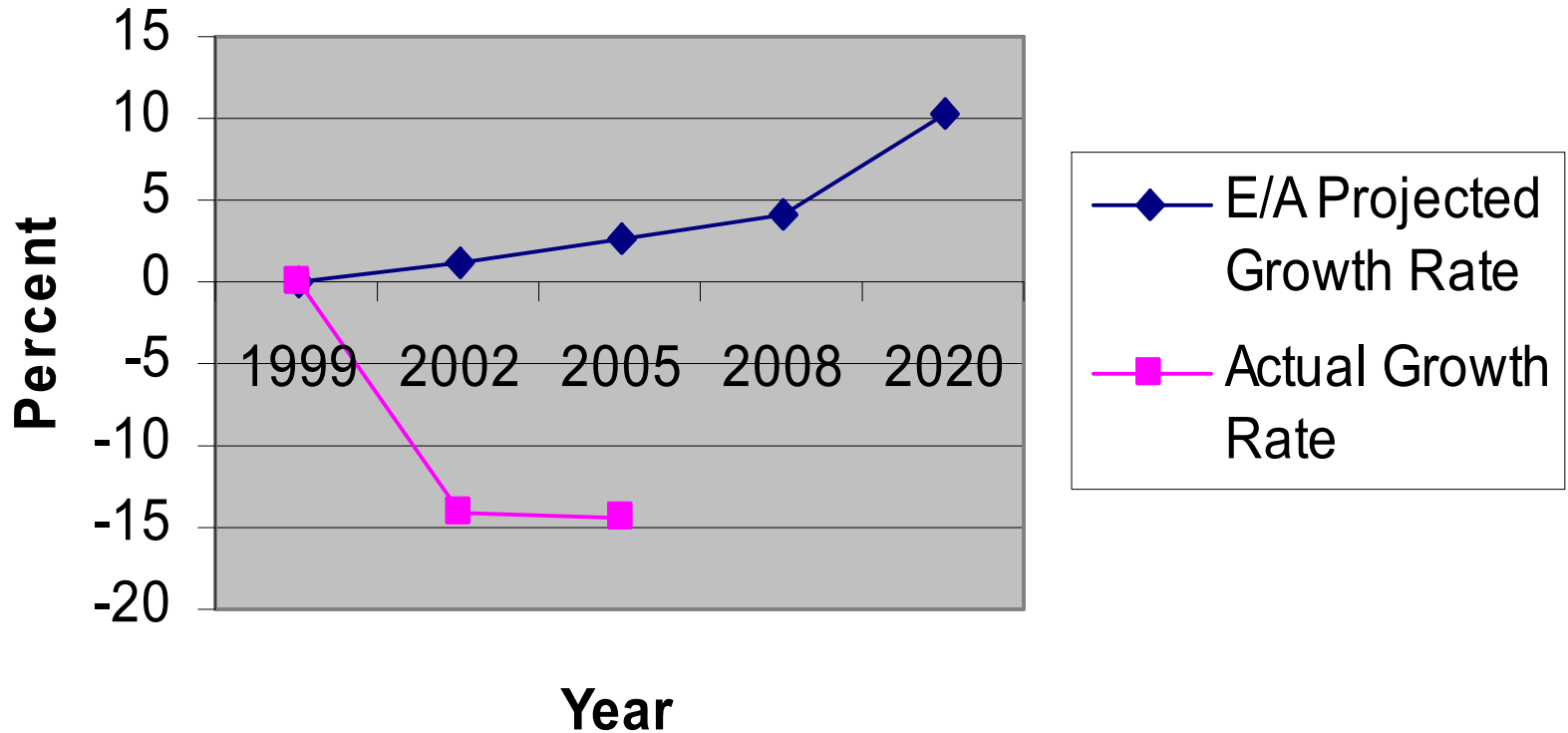




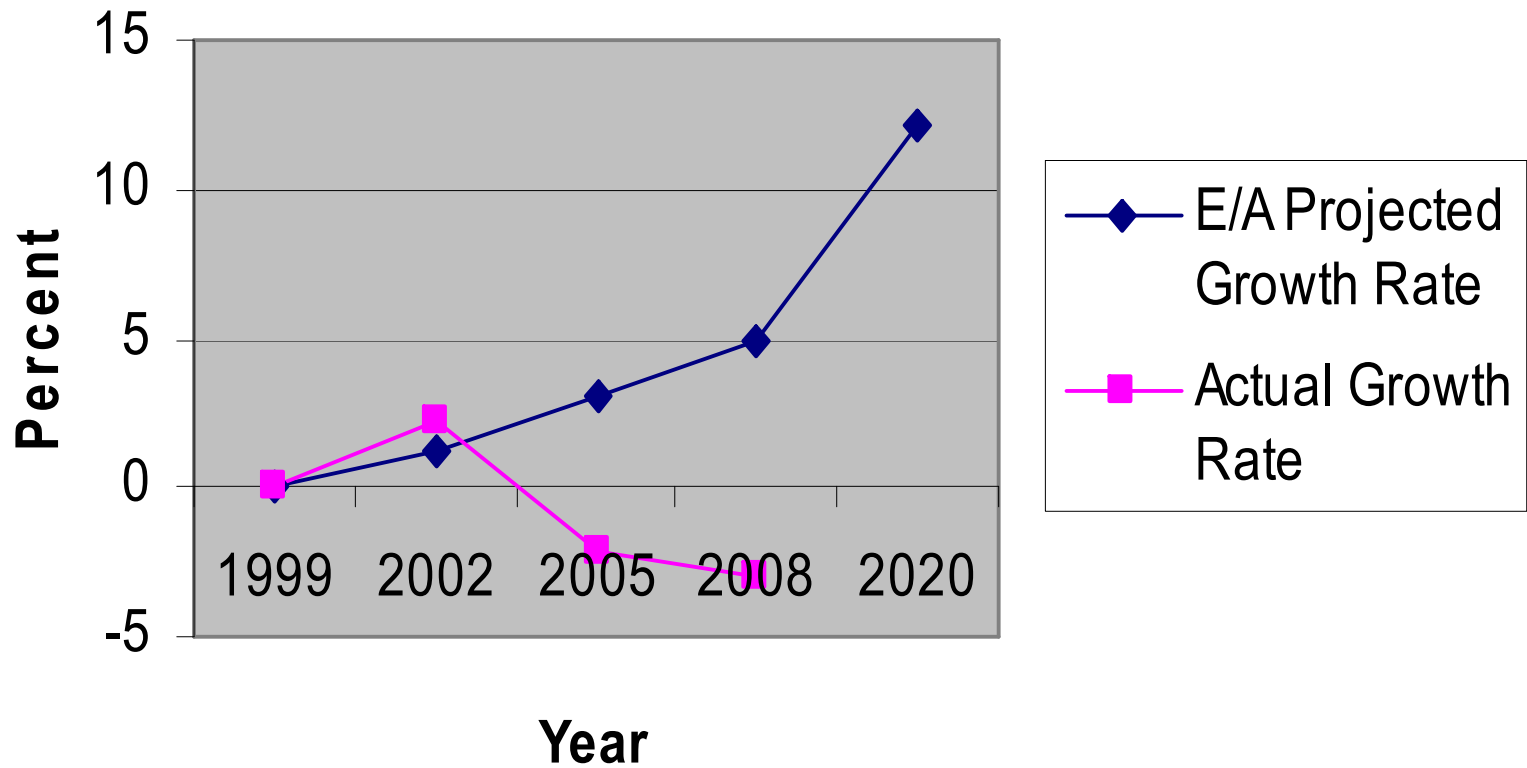
# Traffic Counts



## Projected vs Actual Traffic Growth Rate - OLR



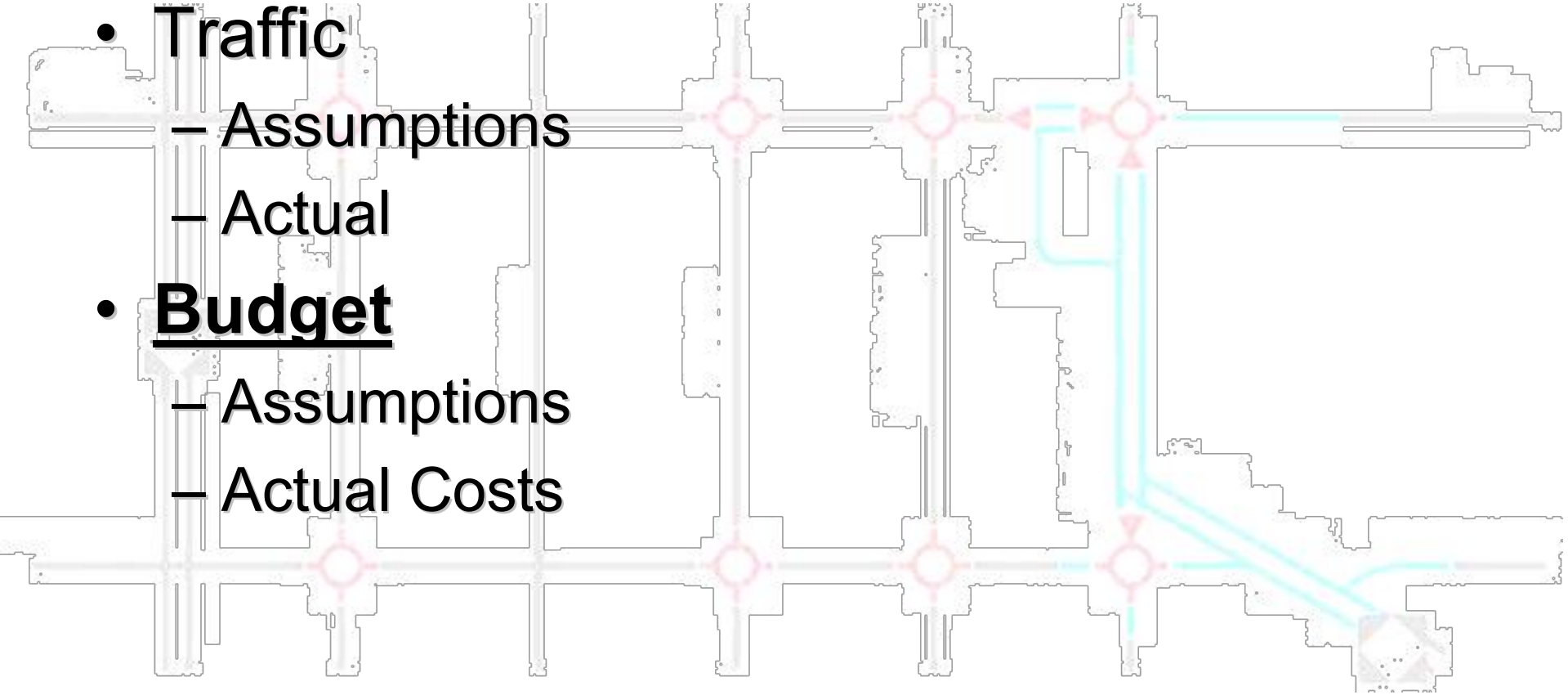
## Projected vs Actual Traffic Growth Rates - Maple Road



# NWC - Where We Are Now



- **Traffic**
  - Assumptions
  - Actual
- **Budget**
  - Assumptions
  - Actual Costs



# NWC Phase I Budget per 1999 E/A



+\$ 4.0 M PE (By MDOT)

+\$11.0M ROW Assumes up to 75% Donation

+\$25.0M Construction / CE

\$40.0M Total

NOTE – Entire NWC Project Assumes \$14.0M total ROW costs



# NWC Phase I Funding

- Original

- +\$ 4.0 M PE MDOT
- +\$26.0M MDOT
- +\$ 3.0M State\*
- +\$ 2.0 M Oakland County
- +\$ 2.5 M RCOC
- +\$ 2.1 M West Bloomfield
- +\$ 0.4 M Farmington Hills
- \$33.0 M Total**

\* Not Received



# NWC Phase I Funding

- Additional Funding

Amount	Fed \$	Local Share	Source
1.5 M	1.5 M	0	2004 Earmark
1.5 M	1.5 M	0	2006 Earmark
7.9 M	6.32 M	1.58 M	SAFETEA-LU
1.0 M	1.0 M	0	2008 Earmark
1.0 M	1.0 M	0	CMAQ
0.4 M	0.32 M	0.08 M	SAFETY
13.3 M	11.64 M	1.66 M	TOTALS

**Total Additional Funding \$13.3 M**



# NWC Phase I Funding

- Funds

+\$33.0M Original Funding (Construction, ROW, Utility, Mitigation, etc.)

+\$13.3M Additional Funding\*

**\$46.3M Total Available\***

-\$19.3 M Spent to Date (Maple & Drake, Maple & Farmington, 14 Mile & Farmington)

\$27.0M Available for Orchard Lake Rd.

\* Includes \$1.7 M additional Local Match

# Orchard Lake Rd. Corridor Costs

2 Rbts, 6 Ln. Boulevard



• Contractor Payments	\$23.0M
• Utilities and F/A	\$4.6M
• ROW	\$12 - \$14M
– Est. appraised value, no condemnations	
• CE	<u>\$3.4M</u>
» Total	<b>\$43.1 - \$45.1M</b>
» <u>Available</u>	<u>\$27.0M</u>
<b>SHORT</b>	<b>\$16.0 – 18.0M</b>



- **Estimated Costs for Orchard Lake Rd. Corridor**

Construction	\$ 23 M
<u>ROW</u>	<u>\$ 12 M</u>
	\$ 35 M

- **Possible Scenarios**

Donated ROW

Delayed Construction

Phase Construction to Match Funds available

Additional Congressional Earmarks for '09

Additional Funding in next Highway Bill 2010?

Additional Funding from RCOC, Farmington Hills,  
and West Bloomfield Township



- **Estimated Costs for Orchard Lake Rd. Corridor**

Construction	\$ 23 M
--------------	---------

<u>ROW</u>	<u>\$ 12 M</u>
------------	----------------

\$ 35 M\*

- **Possible Scenarios**

Donated ROW

Delayed Construction

Phase Construction to Match Funds available

Additional Congressional Earmarks for '09

Additional Funding in next Highway Bill 2010?

Additional Funding from RCOC, Farmington Hills,  
and West Bloomfield Township

\* Did not include \$4.6M Utility Relocation and \$3.4M CE



# NWC Phase I Funding

## Option I: Do Nothing

Maintain Orchard Lake Rd. until additional funding is acquired to purchase ROW and construct original 6 lane boulevard

Additional Costs: \$ 0 Now

>\$ 18M additional Later

Schedule: ?????



# NWC Phase I Funding

## Option II: Partial Construction

Build what we can now, leave remainder until funds are available. Combination of roundabouts, 6 lane boulevard, set limits where funds run out

Additional Costs:     \$ 1.66M Now  
                               \$ >\$18M Later

Schedule:             Phase I 2010  
                               Phase II ?????



# NWC Phase I Funding

## Option III: Reduce Cross Section and Limits to Minimize Costs

Build both roundabouts for traffic and safety, reconstruct existing 5 In. Orchard Lake Rd. between 14 Mile and Maple roundabouts.

Additional Costs: \$ 6 - \$8M

Schedule: 2010



# NWC Phase I Funding

## Option IV: Reduce Cross Section and Limits to Fit Available Funds

Construct Maple Rd. roundabout, Daly/Powers and 5 In. Orchard Lake Rd. to Northwestern Hwy.  
Defer 14 Mile triangle until funds are available.

Additional Costs:     \$ 1.66M – Now  
                              \$ 8.0M – Later

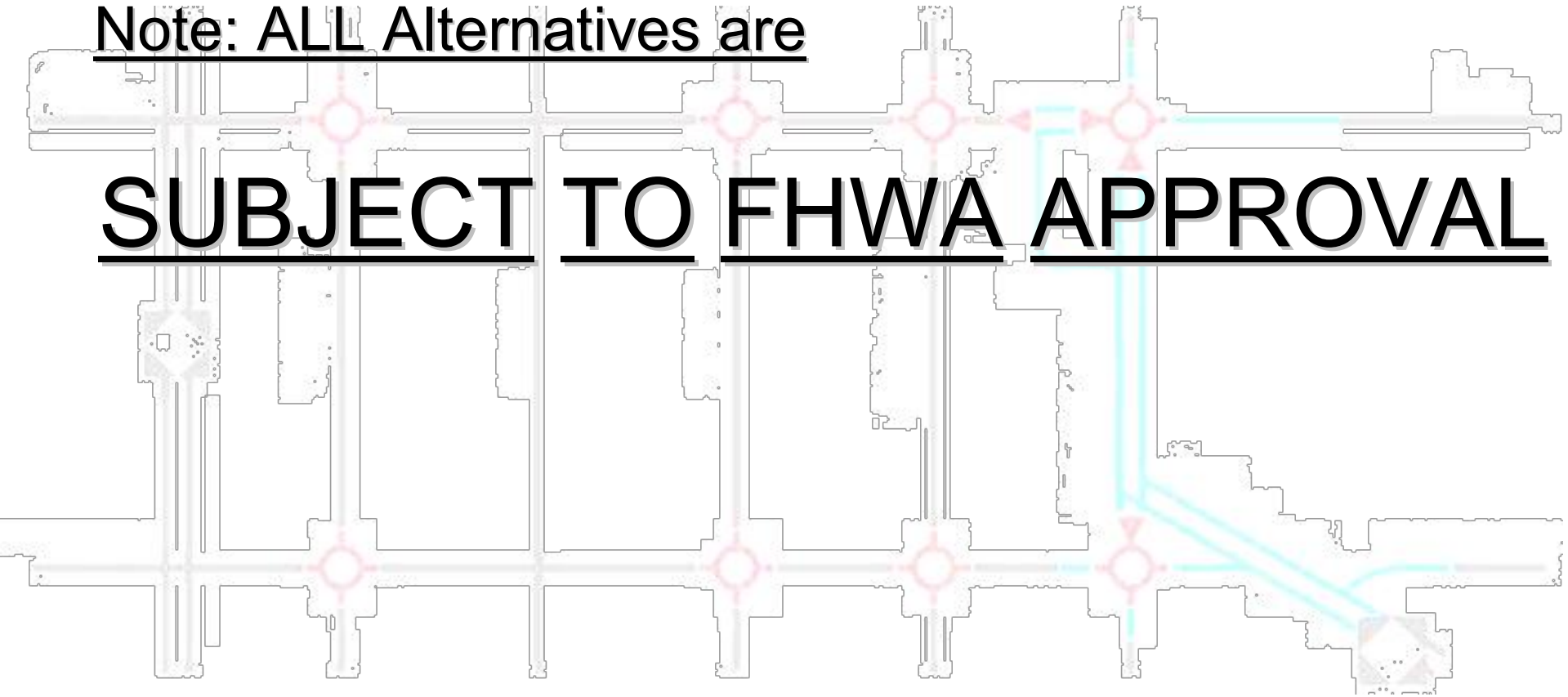
Schedule:             2009 – Orchard Lake Rd.  
                              2010 – Maple roundabout  
                              ????? – 14 Mile triangle

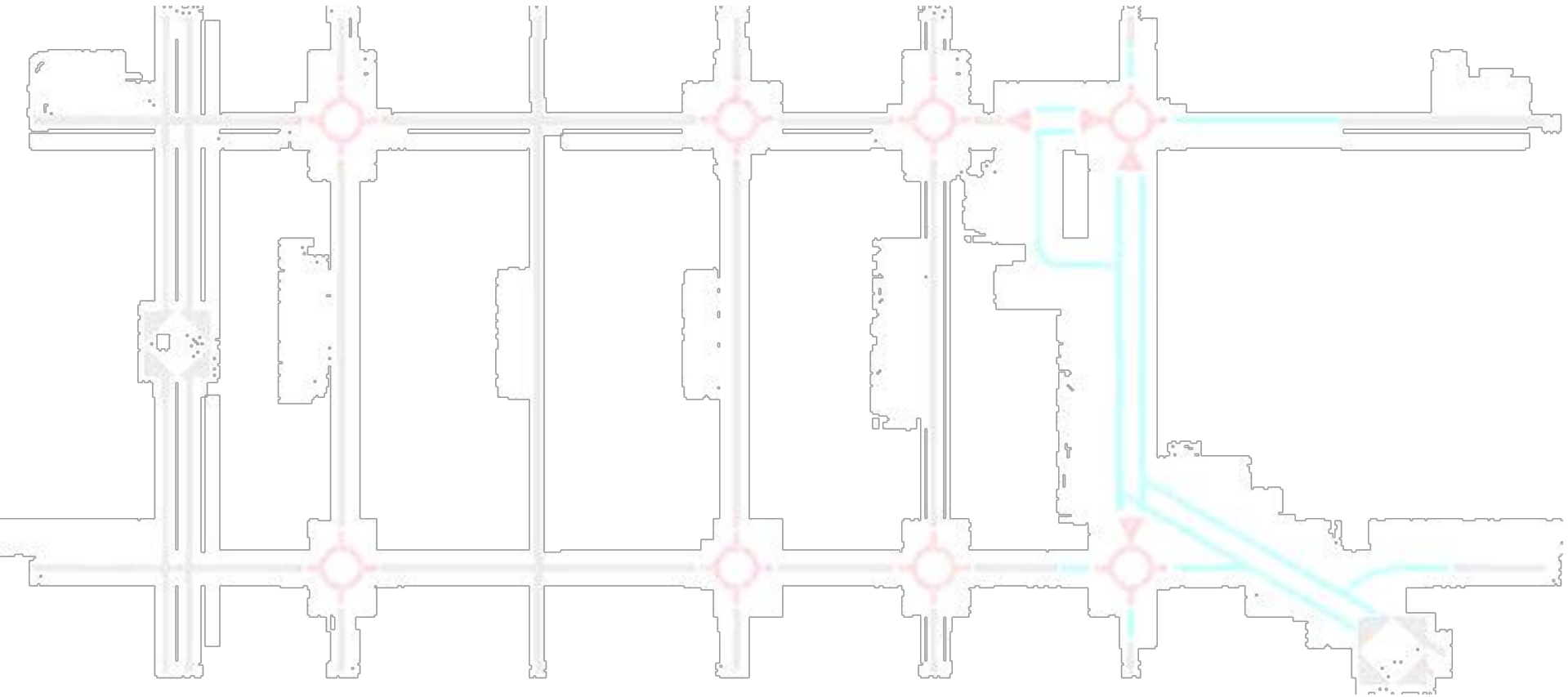
# NWC Phase I Funding

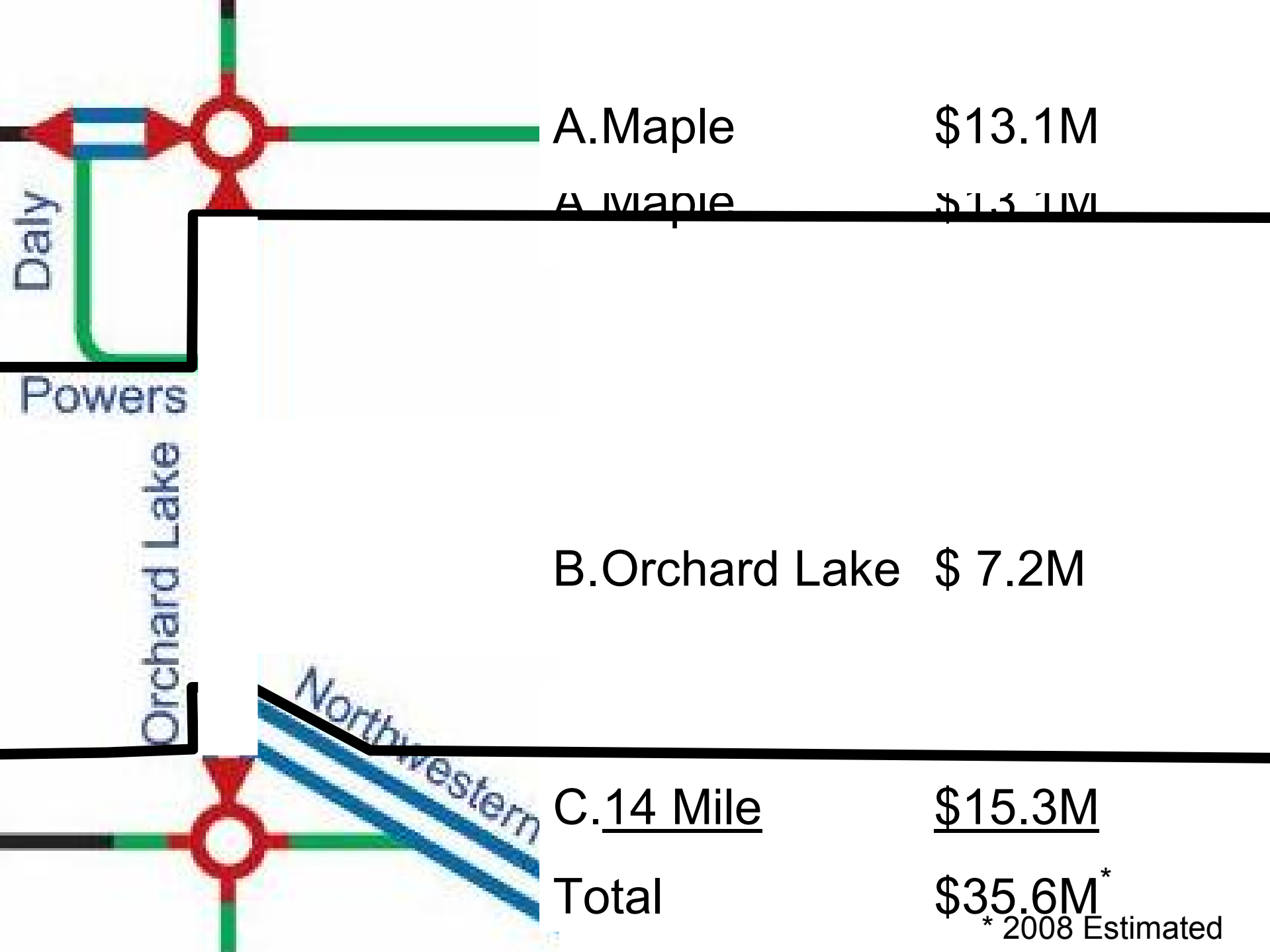


Note: ALL Alternatives are

**SUBJECT TO FHWA APPROVAL**







A. Maple \$13.1M

A. Maple \$13.1M

B. Orchard Lake \$ 7.2M

C. 14 Mile \$15.3M

Total \$35.6M\*  
\* 2008 Estimated

Daly

Powers

Orchard Lake

Northwestern



# Current Funds \$48.5 M

- **Costs**

Maple and Drake	\$ 3.3 M*
Maple and Farmington	\$ 5.0 M*
14 Mile and Farmington	\$ 10.1 M* (est)
<b>“Current” Costs</b>	<b>\$ 18.5 M*</b>

\*Condemnation costs not finished

- Available for Orchard Lake Rd. ROW & Const. \$30 M
- **Estimated** costs for Orchard Lake Rd. Corridor
- Orchard Lake Rd. Corridor Const. \$23 M
- Orchard Lake Rd. Corridor ROW \$12 M (½ Donated = \$ 6M)



# Northwestern Connector

## Budget

- \$40 Million as proposed by committee.  
Anticipated  $\frac{1}{2}$  ROW funded,  $\frac{1}{2}$  donated

**-\$ 4.0 M** MDOT Design  
**-\$ 3.0 M** Committed State Funds not provided (Schulman)  
+\$ 1.5 M Congressman Knollenberg earmark 2004  
+\$ 1.5 M Congressman Knollenberg earmark 2006  
+\$ 2.0 M Congressman Knollenberg earmark 2007  
**- \$ 2.0 M** New congress deletes '07 earmarks  
+\$ 1.0 M Congressman Knollenberg earmark 2008  
+\$ 6.0 M SAFETEA-LU (Knollenberg)  
+\$ 1.5 M CMAQ, SAFETY Grants

---

\$ 48.5 M Subtotal currently funded (**Error, \$44.5**)

**+ \$ 1.6M Local Match SAFETY-LU AND SAFETY**

**\$46.1M Corrected Total Funds Available**